

# Reading from weighing scales

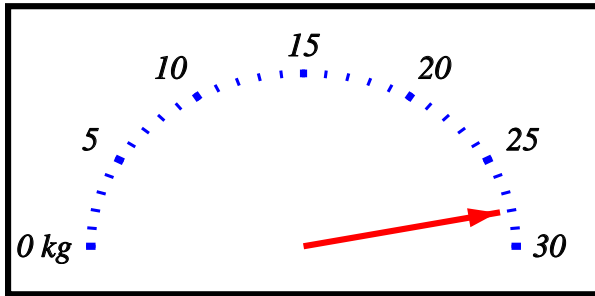
Name: \_\_\_\_\_ Class: \_\_\_\_\_ Date: \_\_\_\_\_

Mark / 8 %

1) Read the weight in kilograms shown on the scale.

kg

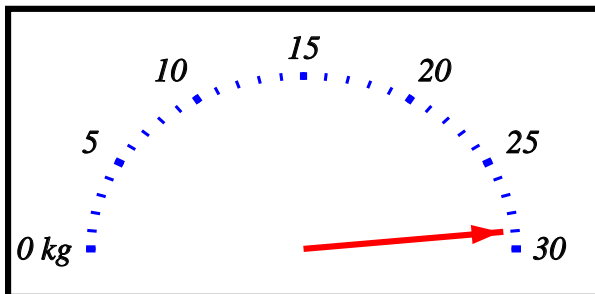
[1]



2) Read the weight in kilograms shown on the scale.

kg

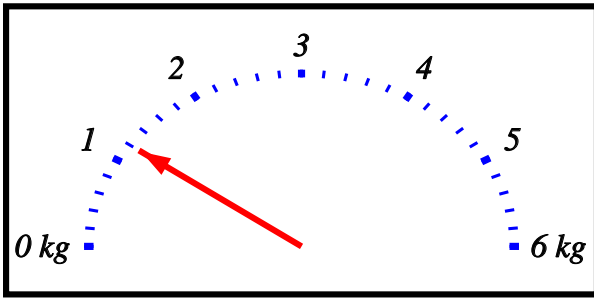
[1]



3) Read the weight in kilograms shown on the scale.

 kg

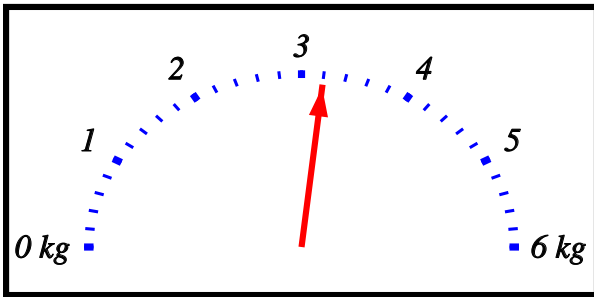
[1]



4) Read the weight in kilograms shown on the scale.

 kg

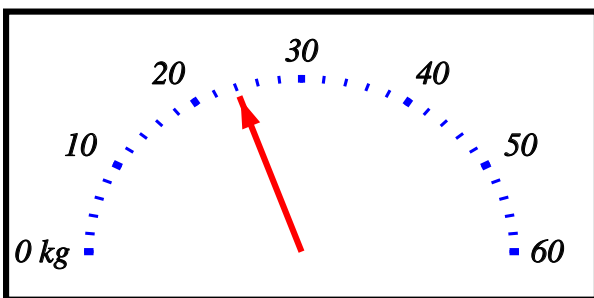
[1]



5) Read the weight in kilograms shown on the scale.

 kg

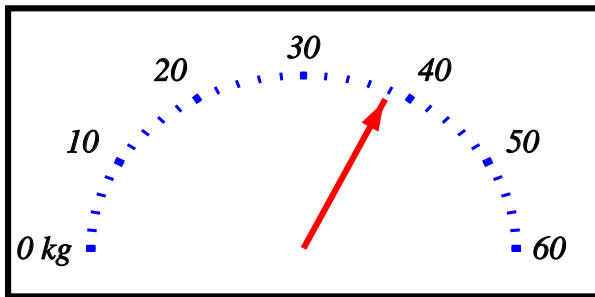
[1]



6) Read the weight in kilograms shown on the scale.

 kg

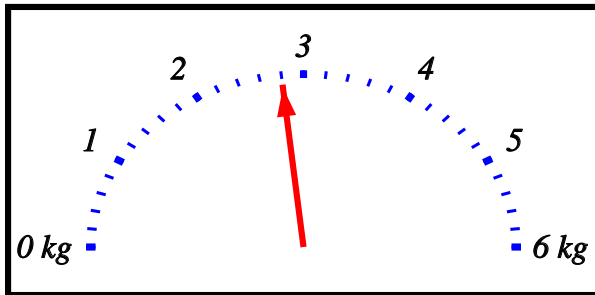
[1]



7) Read the weight in kilograms shown on the scale.

 g

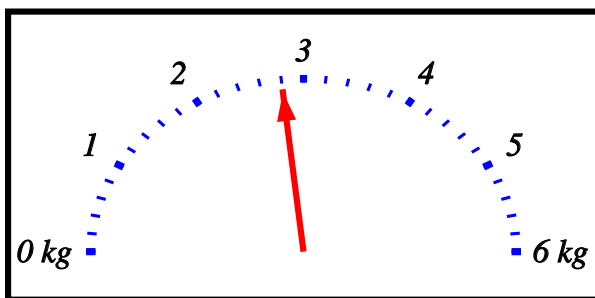
[1]



8) Read the weight in kilograms shown on the scale.

 g

[1]



**Solutions for the assessment Reading from weighing scales**

1) Weight = 28 kg

2) Weight = 29 kg

3) Weight = 1.2 kg

4) Weight = 3.2 kg

5) Weight = 24 kg

6) Weight = 38 kg

7) Weight = 2800 g

8) Weight = 2800 g